

Eoslift

S10/15

**Semi-electric
Pallet
Stacker**

Operating Instructions

Eoslift

Eoslift Automation Technology Corp.
No.99 Yanjia Road, Yuantong Town, Haiyan, Zhejiang Province, China 314317
Tel: +86 573 8622 9999
Fax: +86 573 8622 2900
info@eoslift.com
www.eoslift.com
Hotline: 400-626-9090



S10/15 Series Semi-electric Pallet Stackers

Esteemed users:

For proper and safe operation of the products, before using the products, be sure to read the operating instructions carefully and retain them properly for future reference.

The operator needs to have proficient operation skills. The operator has responsibility to carefully understand the performance and safety rules of the pallet stacker. If you have any doubts during the application, please don't hesitate to contact Eoslift.

Eoslift

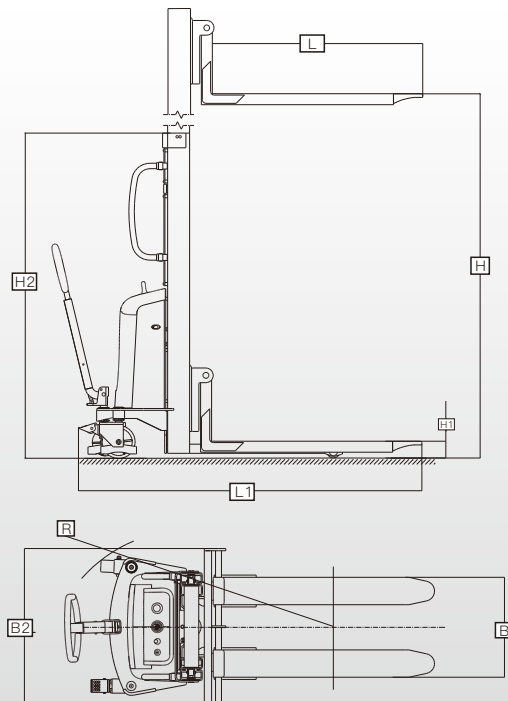


Table of contents

I . Technical parameters	01
II . Safe operating rules	02
III . Maintenance	04
IV . Batteries	05
V . Control panel	06
VI. Transport, loading, test run and storage	07
VII. Troubleshooting	08
VIII. Electrical circuit diagram	10
IX. Parts list	11

Technical parameters

Model		S10	S15
Rated capacity	kg	1500	2000
Load center	mm	600	
Dead-weight	kg	340-412	
Minimum fork height	H1 mm	85	
Maximum fork height	H mm	1600/2500/3000/3500	2000
Lowered Mast Height	H2 mm	2030/1870/2030/2280	1530
Fork length	L mm	1150	
Overall fork width	B mm	540/330-830	
Length of the stacker	L1 mm	1800	
Width of the stacker	B2 mm	745/864	
Minimum turning radius	R mm	1350	
Battery	V/Ah	12/120	



Safe operating rules

1. Requirements for operator

The stacker must be operated by persons trained in operation. The operator shall be able to carry out operation demonstration of moving and controlling goods for users, and he or she is responsible for the stacker. Unauthorized persons are not allowed to operate the stacker. Do not carry or lift passengers.

2. The stacker is only applicable to indoor use and the application environment must meet the following conditions:

- ▶ Free from rainwater or corrosion of harmful gases;
- ▶ Room temperature of $-20^{\circ}\text{C}\sim+40^{\circ}\text{C}$;
- ▶ Relative ambient humidity $<90\%$;
- ▶ Requirements for ground: hard, anti-skid and level without barriers.

3. Faults and defects

If stacker failure or defects occur, immediately notify the management personnel. If the stacker is not safe for operation (such as wheel worn or brake failed, etc.), please stop using it before it is fully repaired.

4. Hazardous area

The hazardous area usually refers to the area where the stacker or its lifting device (e.g. forks, attachments) will pose threat to persons during their operation or lifting process. Typically, this range extends to the area where goods or stacker accessories are lowered.

Warning

Unauthorized persons must leave the hazardous area. Whenever a situation causes possible harm to persons, the operator must give a warning. If the unauthorized persons still stay in the hazardous area after the warning is given, the operator must immediately stop the operation of the stacker.

5. Safety devices and warning signs

- ▶ Safety devices, warning signs and the above safety precautions must be given enough attention to.
- ▶ When handling the goods, the fork height must not exceed 300mm.

6. Operation protection

Hands and feet shall be kept far away from moving parts, such as frame, chains, forks and wheels to prevent pinching hands.

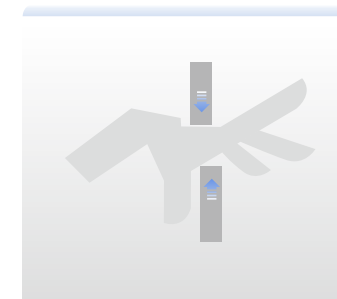


Figure 1

Safe operating rules

7. Stable operation

Travel of stacker shall be stable, avoiding sharp turns and sudden start.

8. Loose or unstable stacking of goods or overloaded cargoes are prohibited.

Loose or unstable stacking of goods will cause falling of goods, or even turnover.

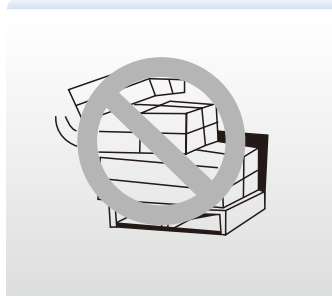


Figure 2

9. Other safety requirements

- ▶ Do not use this stacker on the muddy ground.
- ▶ Do not operate the stacker unless you have carefully checked its condition. Pay special attention to the wheels, the handle assemblies, the frame, the chains, etc.
- ▶ The operator shall wear safety shoes and gloves for protection.
- ▶ Do not use the stacker in a potentially flammable and explosive atmosphere.
- ▶ Do not use the stacker as a vehicle jack.
- ▶ Do not use the stacker during strong wind forces.
- ▶ Do not use the stacker on places insufficiently illuminated.
- ▶ Do not use the stacker on a sloping ground.
- ▶ The weight of goods should be distributed evenly on the two forks, do not use only one fork. The center of gravity of goods beyond the two forks is forbidden.
- ▶ The stacker shall be charged in places properly ventilated and far away from the fire.
- ▶ Stacker should be parked on a smooth place, with its brake pressed, power turned off and the forks lowered to the min. height.
- ▶ Stop using the stacker without guarding plate.
- ▶ Under special conditions or in special locations, the operator should be careful while operating the stacker.

Maintenance

No modifications or alterations to the parts of the stacker, especially the safety device shall be made without permission. All original spare parts have been checked by the quality inspection departments. To ensure the safety and reliability of the stacker operation, only the manufacturer's spare parts can be used. Replaced parts, such as batteries and waste oil, must be disposed in accordance with the appropriate environmental protection rules.

⚠ Warning

Only customer service persons specially trained by our company can carry out maintenance of the truck. Thoroughly standardized maintenance is the most important preconditions to ensure stable and reliable operation performance of the stacker. Neglect of regular maintenance could result in failure and malfunction of the truck and poses a potential threat to the safety of the staff and operation.

1. Hydraulic oil

Please check the oil level every six months and change the oil every twelve months. 32 # hydraulic oil is recommended, with total volume of about 4.0 liters.

2. Routine maintenance

It is necessary to check and maintain the stacker daily for sound application. Special attention should be paid to:

- (1) The wheels, the axles, as foreign bodies may block the wheels and axles,
- (2) The fork and the frame which may be deformed. and
- (3) If the battery voltage is normal. The forks should be unloaded and lowered in the lowest position when the job is over.

3. Lubrication

Use motor oil or grease to lubricate all movable parts.

4. Maintenance of battery

Keep all nuts tight, dry and clean. Each wiring terminal and cable joints must be tightened and coated with clean grease. The exposed wiring terminals and binding posts of the battery must be covered with insulated cover.

Battery

1. Battery power system

- ▶ 12V, 120Ah lead-acid storage batteries are used in this series of stackers.
- ▶ The storage battery shall be placed in the special anti-spilling case which should be fixed with bolts.
- ▶ The storage battery cannot be overturned when installing and moving it in case the acid liquor spills out.
- ▶ Keep power off when the stacker is not in use.

2. Battery charging

- ▶ When the left two segments of the battery indicator flash, please charge the battery.
- ▶ Please check the level of battery electrolyte every week, if the electrolyte is not enough, add some distilled water or electrolyte.
- ▶ The stacker shall be charged in places properly ventilated and far away from the fire.
- ▶ If the stacker will be not in use for long time, charge it fully for storage and charge it once every month.
- ▶ Do not use the stacker when it is charged.

Control panel

① Emergency stop switch

When you press down this switch, it will switch off the power of the stacker, and then if you turn it clockwise, it will switch on the power.

② Control handle of pump

This handle controls the lifting and lowering of the forks.

③ Battery indicator

It is a battery indicator with 10 segment color LED bar graph display. When the battery level is too low, the left two segments of LED bar graph display will flash to give an alarm.

④ Key switch

When you turn this switch clockwise, it will switch on the power. When you turn this switch counterclockwise, it will switch off the power. Before leaving the stacker, fully lowered its forks and take out the key switch.

⑤ Charger socket

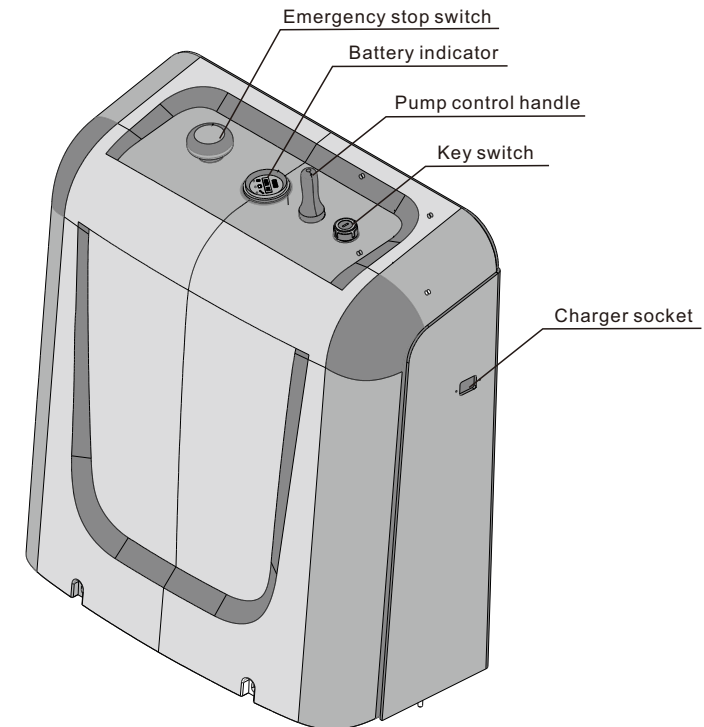


Figure 3

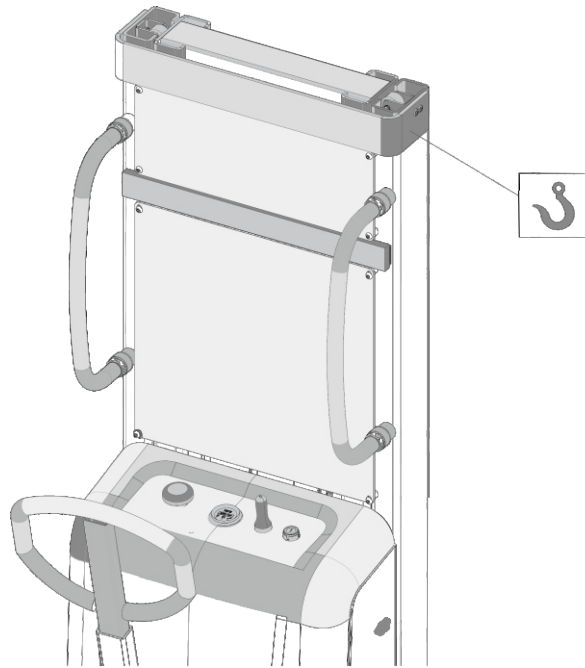


Figure 4

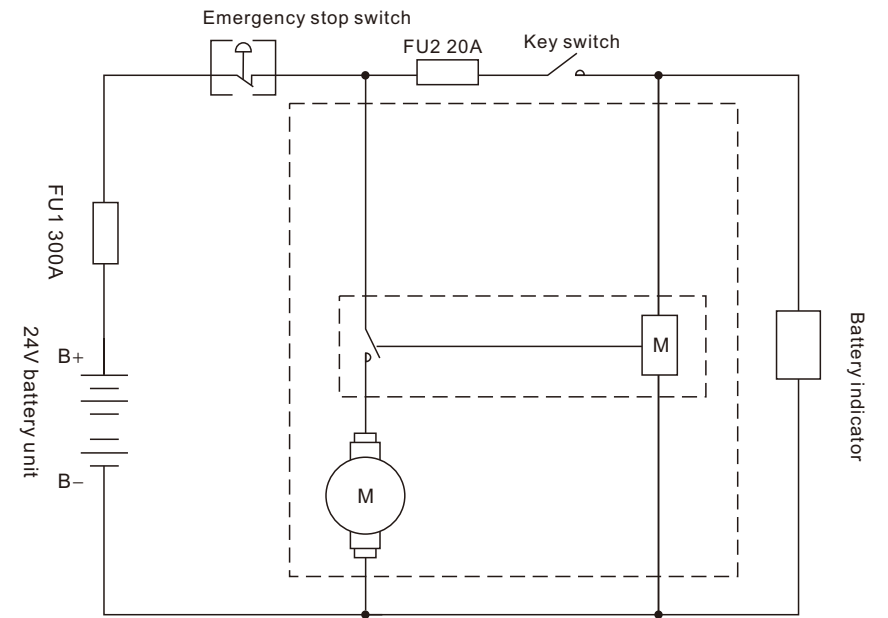
As shown in Figure 4, when the stacker is transported by hoisting equipment, lifting points are on both sides of the stacker.

- ▶ Before loading, the operator shall check the stacker weight to choose the suitable hoisting equipment. When the stacker is unloaded, the operator shall look out for safety around to ensure safe landing of the stacker.
- ▶ The stacker shall be commissioned according to the following function tests: steering, traveling, braking and combined functions with rated capacity.
- ▶ When a stacker is inoperative, the loads (if applicable) shall be removed with a proper tools, the stacker shall be transported out of the working zone with a proper way.
- ▶ When the stacker will be shut down and in storage for a long time, the storage environment shall be kept dry and clean, with forks lowered to their lowest position.

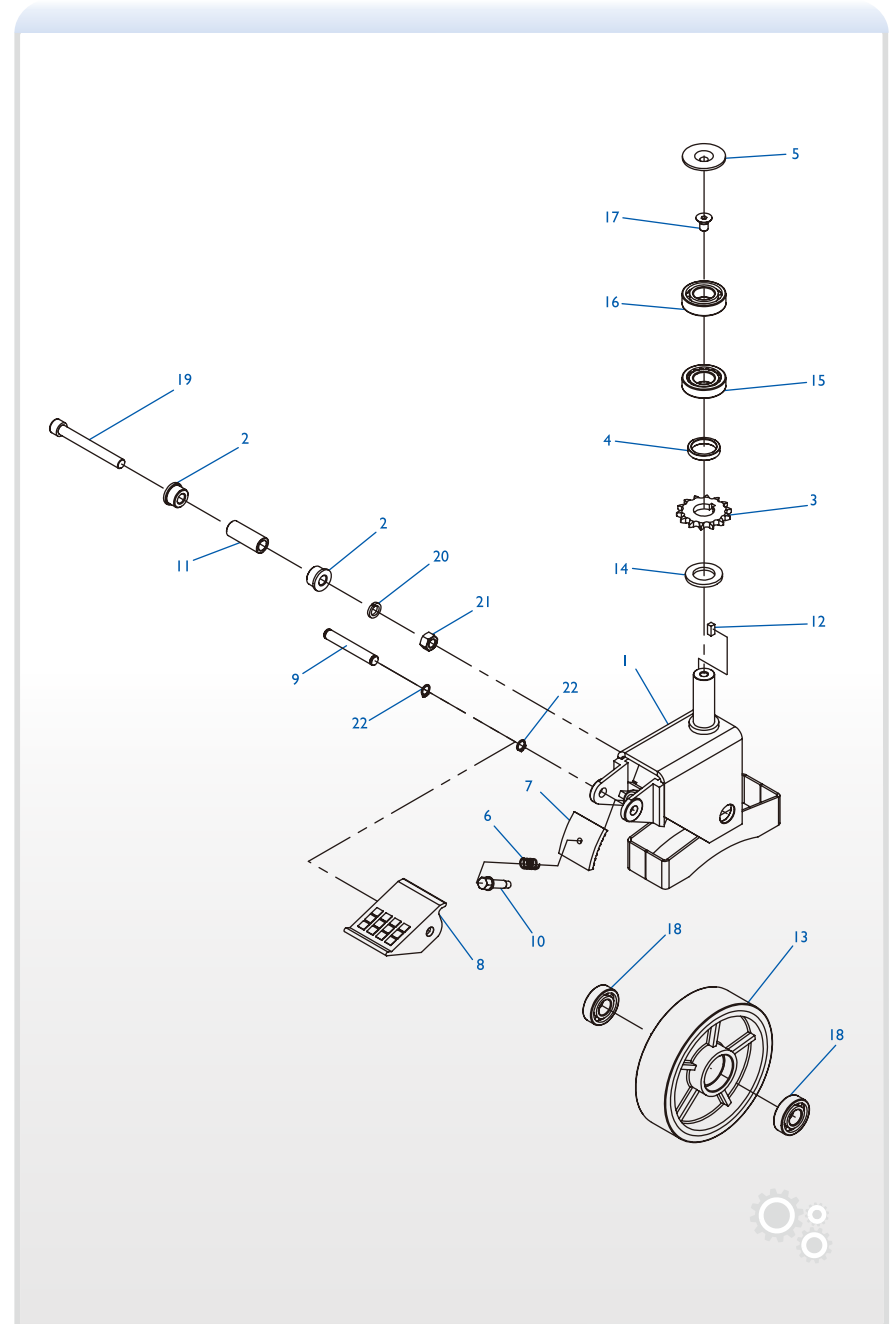
This chapter enables the user to identify and rectifies basic faults and the effects of incorrect operation. When trying to locate a fault, proceed in the order shown in the table below. If, after carrying out the following remedial action listed in "actions", the stacker cannot be restored to operation, contact the manufacturer's after-sale service department. Additional troubleshooting must only be performed by the manufacturer's specialist service engineers. The manufacturer's customer service department is specially trained to carry out these operations.

No.	Fault	Possible cause	Action
1	The forks cannot be lifted to max. height	The hydraulic oil is insufficient	Add the hydraulic oil
2	The forks cannot be lifted	<ul style="list-style-type: none"> ▶ The hydraulic oil is insufficient ▶ The hydraulic oil has impurities ▶ Seals damaged 	<ul style="list-style-type: none"> ▶ Add the hydraulic oil ▶ Change hydraulic oil ▶ Replace the damaged seals with new seals
3	The motor of the pump station cannot operate	<ul style="list-style-type: none"> ▶ Lifting switch is damaged ▶ Battery voltage is too low ▶ The connectors of the power line are loose ▶ The motor contactor is damaged ▶ Motor is damaged 	<ul style="list-style-type: none"> ▶ Replace the switch damaged with a new switch ▶ Charge the battery ▶ Tighten the connectors ▶ Replace the damaged contactor with a new contactor ▶ Repair or replace it.
4	The forks cannot be lowered	<ul style="list-style-type: none"> ▶ The piston rod or the frame is deformed resulting from overloading or cargo slanting to one side ▶ The forks was kept in raised position for extended period of time, then the piston rod is exposed to the air and gets rusted , which blocks the motion of the piston ▶ The relief valve of the hydraulic pump station cannot be opened due to wear or damage 	<ul style="list-style-type: none"> ▶ Replace the related parts of the cylinder or the frame with new ones ▶ Keep the forks at the lowest position while not in use, and keep piston rods lubricated in time ▶ Replace the relief valve of the hydraulic pump station

5	Oil leakage	Seals damaged	Replace the damaged seals with new seals
6	The forks descended without operation	<ul style="list-style-type: none"> ▶ Impurities in the oil cause the valve to be unable to close tightly ▶ Seals damaged ▶ The relief valve of the hydraulic pump station is damaged. 	<ul style="list-style-type: none"> ▶ Change hydraulic oil ▶ Replace the damaged seals with new seals ▶ Replace the relief valve of the hydraulic pump station
7	Battery cannot be charged	<ul style="list-style-type: none"> ▶ Battery damage ▶ Charging plug becomes loose ▶ Charger damage 	<ul style="list-style-type: none"> ▶ Replace the battery ▶ Tighten the plug ▶ Repair or replace it

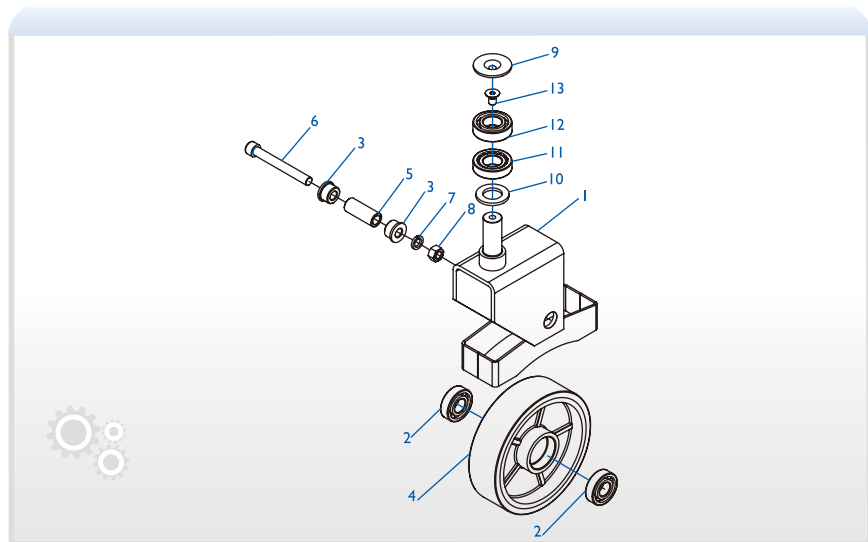


NO.	Parts number	Description	Qty.
1	WC02000237	Universal wheel bracket,with brake,black	1
2	WC02000234	Big wheel shaft sleeve 1	2
3	WC02000243	Sprocket	1
4	WC02000244	Backing ring	1
5	WC02000245	Wheel shaft cover	1
6	WC02000240	Compressions spring	1
7	WC02000238	Brake lining, galvanized	1
8	WC02000241	Brake pedal	1
9	WC02000242	Brake pedal shaft	1
10	WC02000239	Shoulder screw	1
11	WC02000235	Big wheel shaft sleeve 2	1
12	WC02000236	Key	1
13	WC02000226	Iron-core PU wheel φ180×50, bright red PU, black iron core	1
	WC02000285	Nylon wheelφ180×50(flower-shape wheel)	
	WC02000435	Nylon wheelφ180×50(plane wheel)	
14	WE05000010	GB95,Plain washer 24,galvanized	1
15	WC02000225	GB297,Tapered Roller Bearings 30205	1
16	WC02000224	GB276,Deep groove ball bearing 6205, two-side shielded	1
17	WE03000013	GB2673,Hexagon lobular socket countersunk head screw M10×16,galvanized	1
18	WC02000022	GB276,Deep groove ball bearing 6204, two-side shielded	2
19	WE03000018	GB70.1, Hexagon socket head cap screw M12×100, galvanized	1
20	WE05000006	GB93,Normal type spring lock washer 12, galvanized	1
21	WE04000011	GB6170,Hexagon nut M12,galvanized	1
22	WE07000009	GB894.1,Circlip for shaft 12,blackening	2



Parts list- Guide wheel

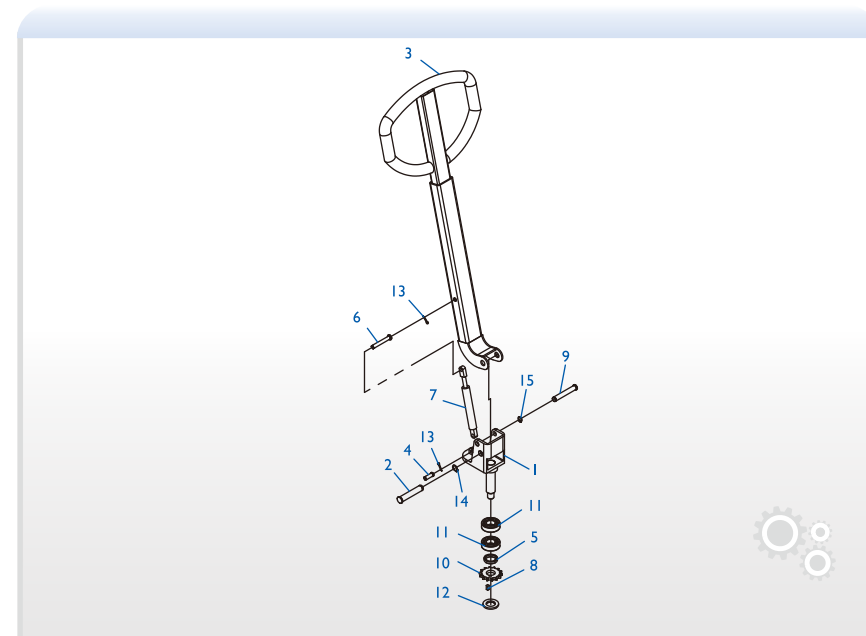
NO.	Parts number	Description	Qty.
1	WC02000246	Guide wheel bracket,black	1
2	WC02000022	GB276,Deep groove ball bearing 6204, two-side shielded	2
3	WC02000234	Big wheel shaft sleeve 1	2
4	WC02000226	Iron-core PU wheel φ180×50, bright red PU, black iron core	1
	WC02000285	Nylon wheelφ180×50(flower-shape wheel)	
	WC02000435	Nylon wheelφ180×50(plane wheel)	
5	WC02000235	Big wheel shaft sleeve 2	1
6	WE03000018	GB70.1, Hexagon socket head cap screw M12×100, galvanized	1
7	WE05000006	GB93,Normal type spring lock washer 12, galvanized	1
8	WE04000011	GB6170,Hexagon nut M12,galvanized	1
9	WC02000245	Wheel shaft cover	1
10	WE05000010	GB95,Plain washer 24,galvanized	1
11	WC02000225	GB297,Tapered Roller Bearings 30205	1
12	WC02000224	GB276,Deep groove ball bearing 6205, two-side shielded	1
13	WE03000013	GB2673,Hexagon lobular socket countersunk head screw M10×16,galvanized	1



Parts list- Handle assemblies

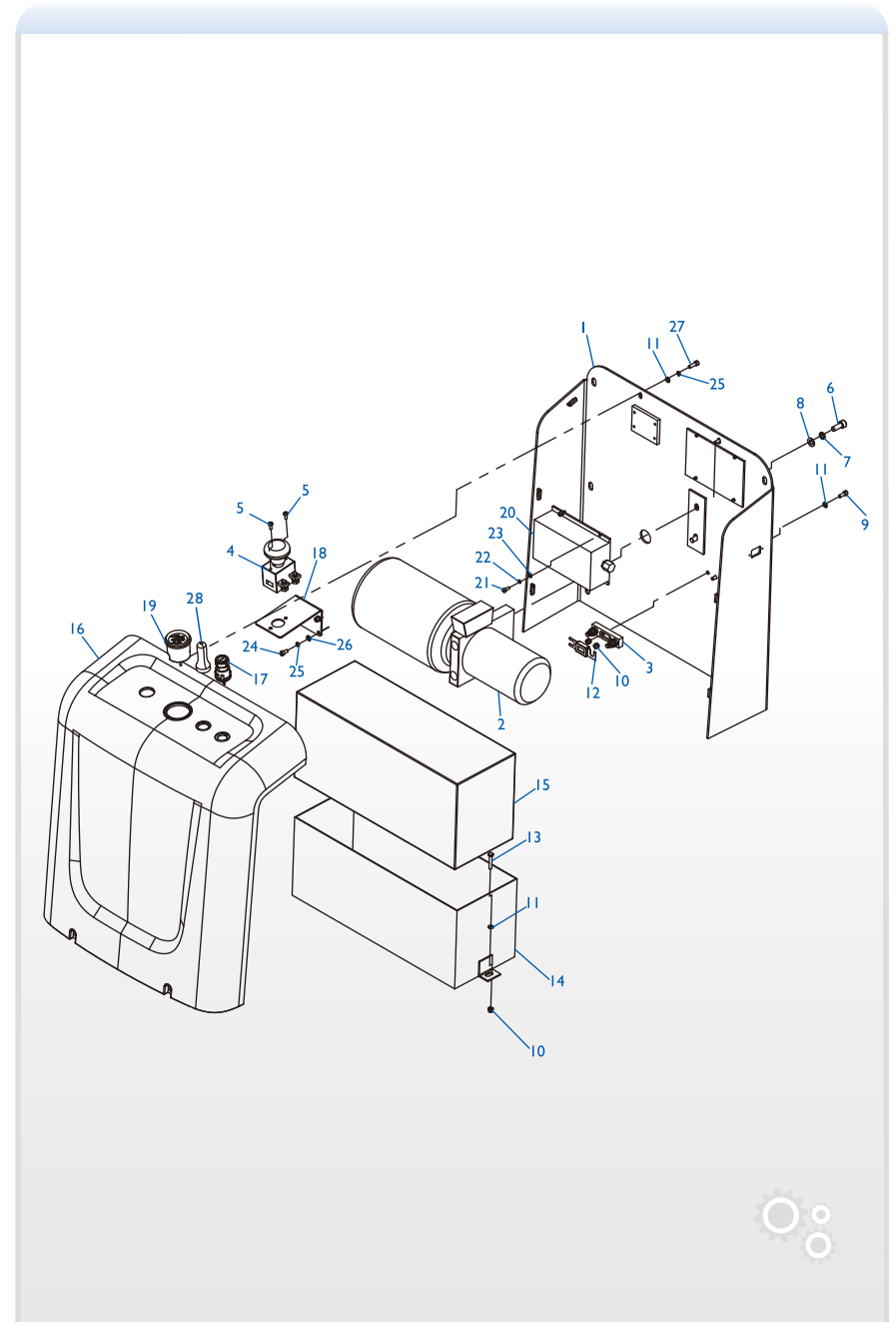
S10/15 Series Semi-electric Pallet Stackers

NO.	Parts number	Description	Qty.
1	WC02000821	Handle holder, welded	1
2	WC02000818	Pivot II	1
3	WC02000822	Handle lever welded	1
4	WC02000817	Pivot I	1
5	WC02000244	Backing ring	1
6	WC02000819	Pivot III	1
7	WC02000248	Gas spring	1
8	WC02000236	Key	1
9	WC02000820	Pivot IV	1
10	WC02000243	Sprocket	1
11	WC02000224	Deep groove ball bearing	2
12	WE05000010	Plain washer	1
13	WE06000018	Cotter pin	2
14	WE07000002	Circlip for shaft	1
15	WE07000019	Circlip for shaft	1

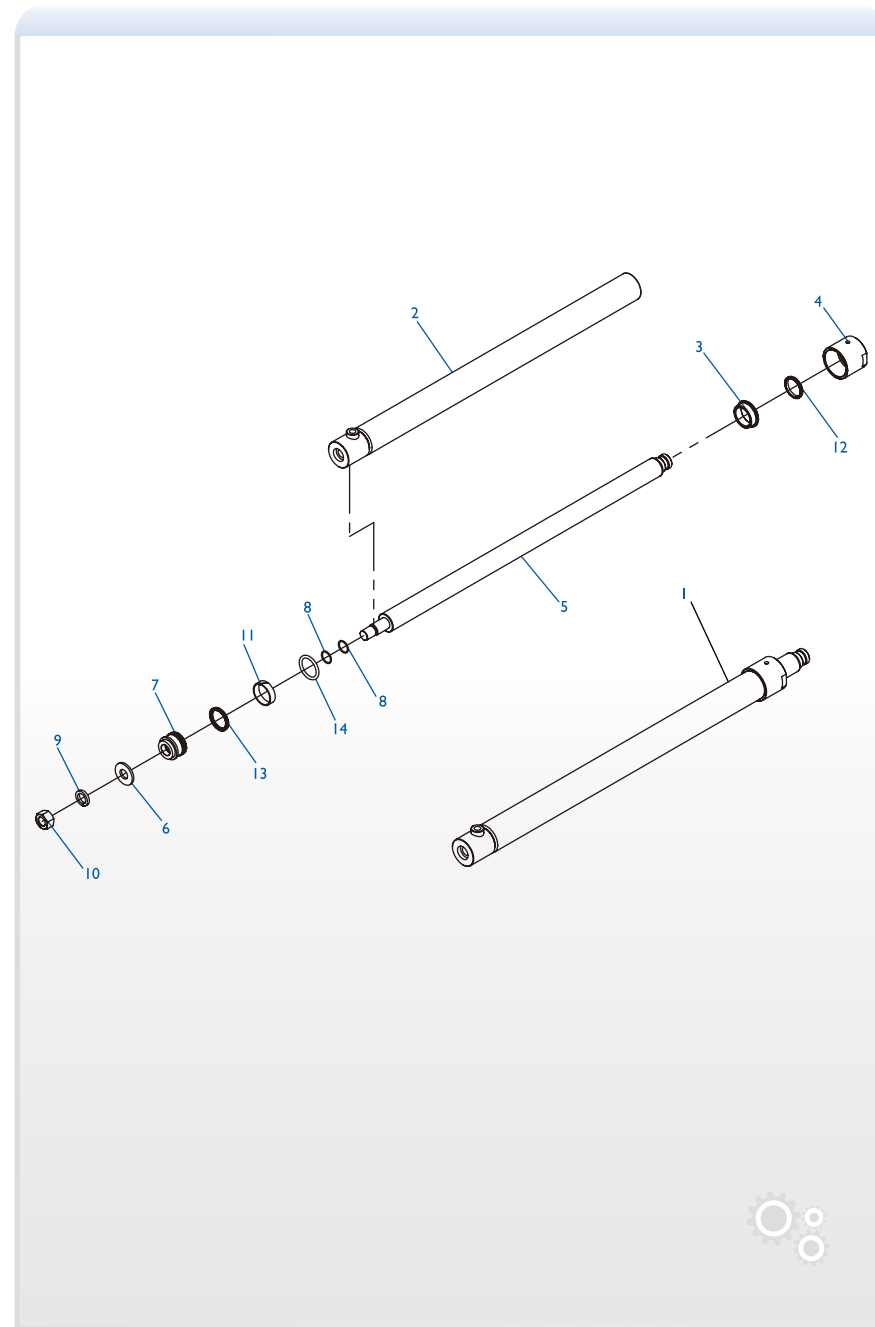


Parts list- Motor box

NO.	Parts number	Description	Qty.
1	WC02000815	Electrical box welded	1
2	WC02000269	Hydraulic pump station	1
3	WC04000022	Fuse connecting holder	1
4	WC04000020	Emergency stop switch ZJK250A	1
5	WE03000006	Pan head screw with cross recess	2
6	WE03000004	Hexagon socket head cap screw	2
7	WE05000002	Spring lock washer	2
8	WE05000009	Plain washer	2
9	WE03000001	Hexagon socket head cap screw	2
10	WE04000017	Hexagon locking nut	4
11	WE05000003	Plain washer	6
12	WC04000011	Fuses	1
13	WE01000003	Bolt	2
14	WC02000255	Battery box	1
15	WC02000268	Battery	1
16	WC02000814	Housing	1
17	WC04000058	Key switch	1
18	WC02000816	Emergency stop switch support,welded	1
19	WC04000013	Battery indicator	1
20	WC04000069	CZC7-300W, built-in charger (conforming to European Standards)	1
21	WE03000034	Hexagon socket head cap screw	4
22	WE05000016	Spring lock washer	4
23	WE05000004	Plain washer	4
24	WE03000035	Hexagon socket head cap screw	4
25	WE05000001	Spring lock washer	6
26	WE05000003	Plain washer	4
27	WE03000021	Hexagon socket head cap screw	2
28	WC04000071	Cross switch	1

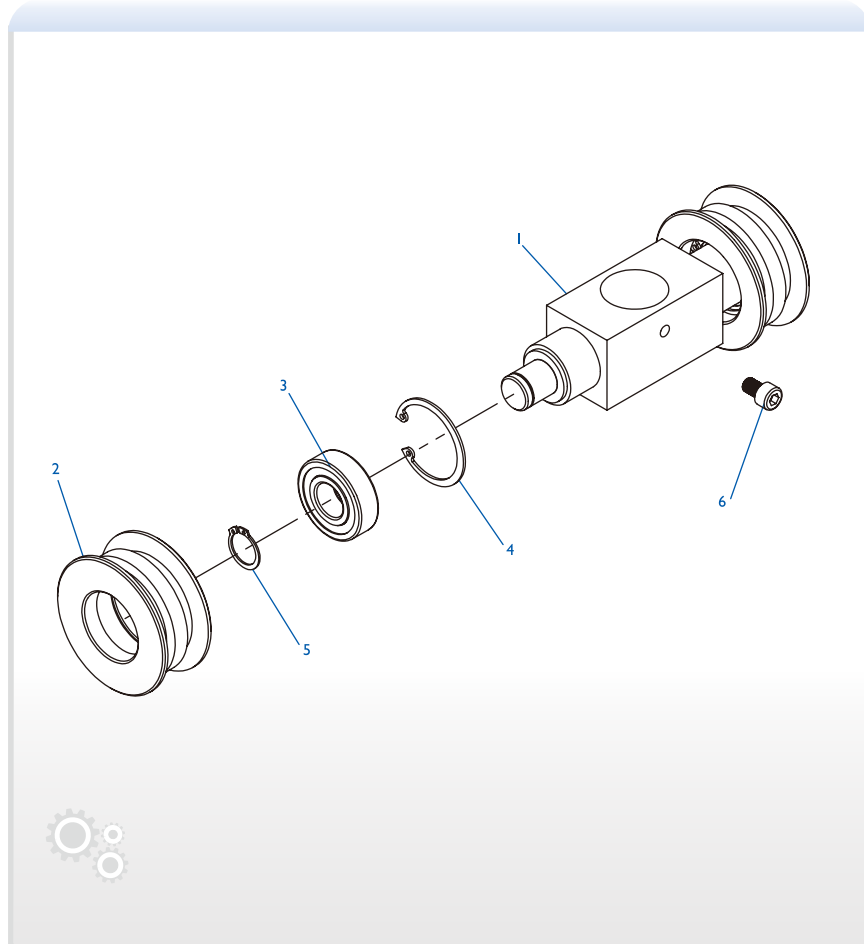


NO.	Parts number	Description	Qty.
1	WC01000015	Cylinder assembly (1.6m), black	1
	WC01000019	Cylinder assembly (2.0m), black	
	WC01000016	Cylinder assembly (2.5m), black	
	WC01000017	Cylinder assembly (3.0m), black	
	WC01000018	Cylinder assembly (3.5m), black	
2	WC02000233	Cylinder weldment (1.6m), black	1
	WC02000333	Cylinder weldment (2.0m), black	
	WC02000305	Cylinder weldment (2.5m), black	
	WC02000303	Cylinder weldment (3.0m), black	
	WC02000312	Cylinder weldment (3.5m), black	
3	WC02000275	Guide sleeve	1
4	WC02000272	Cap, galvanized	1
5	WC02000271	Piston rod(1.6m)	1
	WC02000334	Piston rod(2.0m)	
	WC02000306	Piston rod(2.5m)	
	WC02000304	Piston rod(3.0m)	
	WC02000313	Piston rod(3.5m)	
6	WC02000274	Washer, galvanized	1
7	WC02000273	Piston	1
8	WC02000279	GB3452.1,O-ring $\phi 26.2 \times 2.4$	2
9	WE05000011	GB93,Normal type spring lock washer 24, galvanized	1
10	WE04000018	GB6171,Hexagon nut M24x1.5,galvanized	1
11	WC02000278	ZS50 Guide ring 50x55x14.8	1
12	WC02000276	DH45 Dustproof ring 45x53x6.5	1
13	WC02000280	UHS45 Sealing ring 45x56x7	1
14	WC02000277	GB3452.1,O-ring $\phi 50.8 \times 3.1$	1



Parts list- Top beam assembly

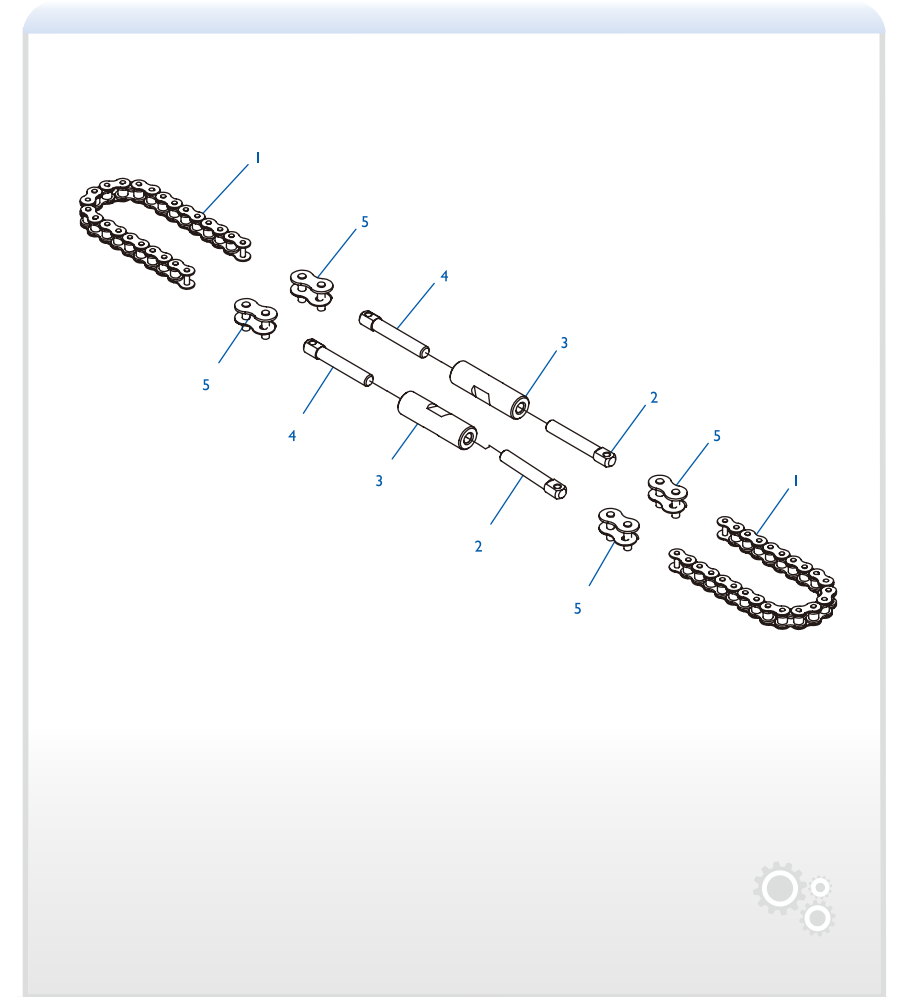
NO.	Parts number	Description	Qty.
1	WC02000256	Top shaft, galvanized	1
2	WC02000317	Sprocket (leaf chain)	2
3	WC02000022	GB276.Deep groove ball bearing 6204, two-side shielded	2
4	WE07000006	GB893.1,Circlip for hole 47,blackening	2
5	WE07000004	GB894.1,Circlip for shaft 20,blackening	2
6	WE03000017	GB70.1,Hexagon socket head cap screw M8x12,galvanized	1



Parts list- Steering chain

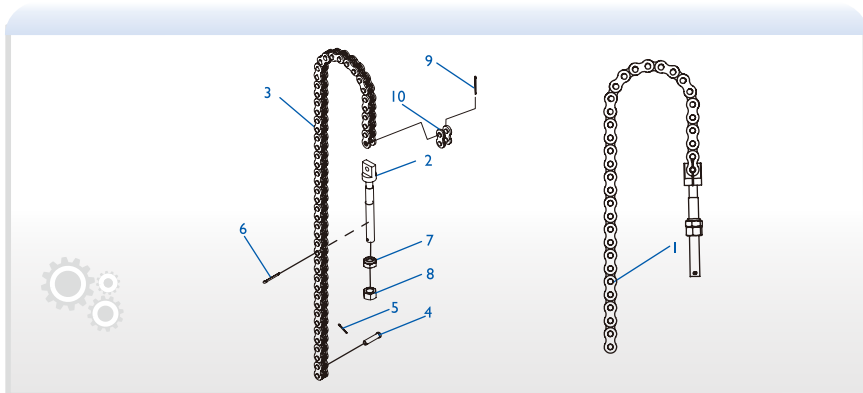
S10/15 Series Semi-electric Pallet Stackers

NO.	Parts number	Description	Qty.
1	WC02000219	Chain	2
2	WC02000263	Threaded rod (right)	2
3	WC02000262	Threaded rod sleeve	2
4	WC02000265	Threaded rod (left)	2
5	WC02000220	Single-row roller chain CL connector 08A-1	4



Parts list- Leaf chain

NO.	Parts number	Description	Qty.
1	WC02000314	Leaf chain, 68 links (1.6m)	2
	WC02000332	Leaf chain, 88 links (2.0m)	
	WC02000321	Leaf chain, 90 links (2.5m)	
	WC02000325	Leaf chain, 102 links (3.0m)	
	WC02000326	Leaf chain, 116 links (3.5m)	
2	WJ11900006	LH1223 long end connector	2
3	WJ11900008	Leaf chain, 68 links (1.6m)	2
	WJ11900009	Leaf chain, 88 links (2.0m)	
	WJ11900011	Leaf chain, 90 links (2.5m)	
	WJ11900012	Leaf chain, 102 links (3.0m)	
	WJ11900013	Leaf chain, 116 links (3.5m)	
4	WJ11900015	Chain pivot	2
5	WJ11900003	GB91, Cotter pin 2 × 16	2
6	WJ11900001	GB91, Cotter pin 3.2 × 32	2
7	WJ11900005	Spherical nut	2
8	WJ11900004	GB6171, nut M14 × 1.5 × 12.8	2
9	WJ11900002	GB91, Cotter pin 2 × 32	2
10	WJ11900016	Chain shackle	2



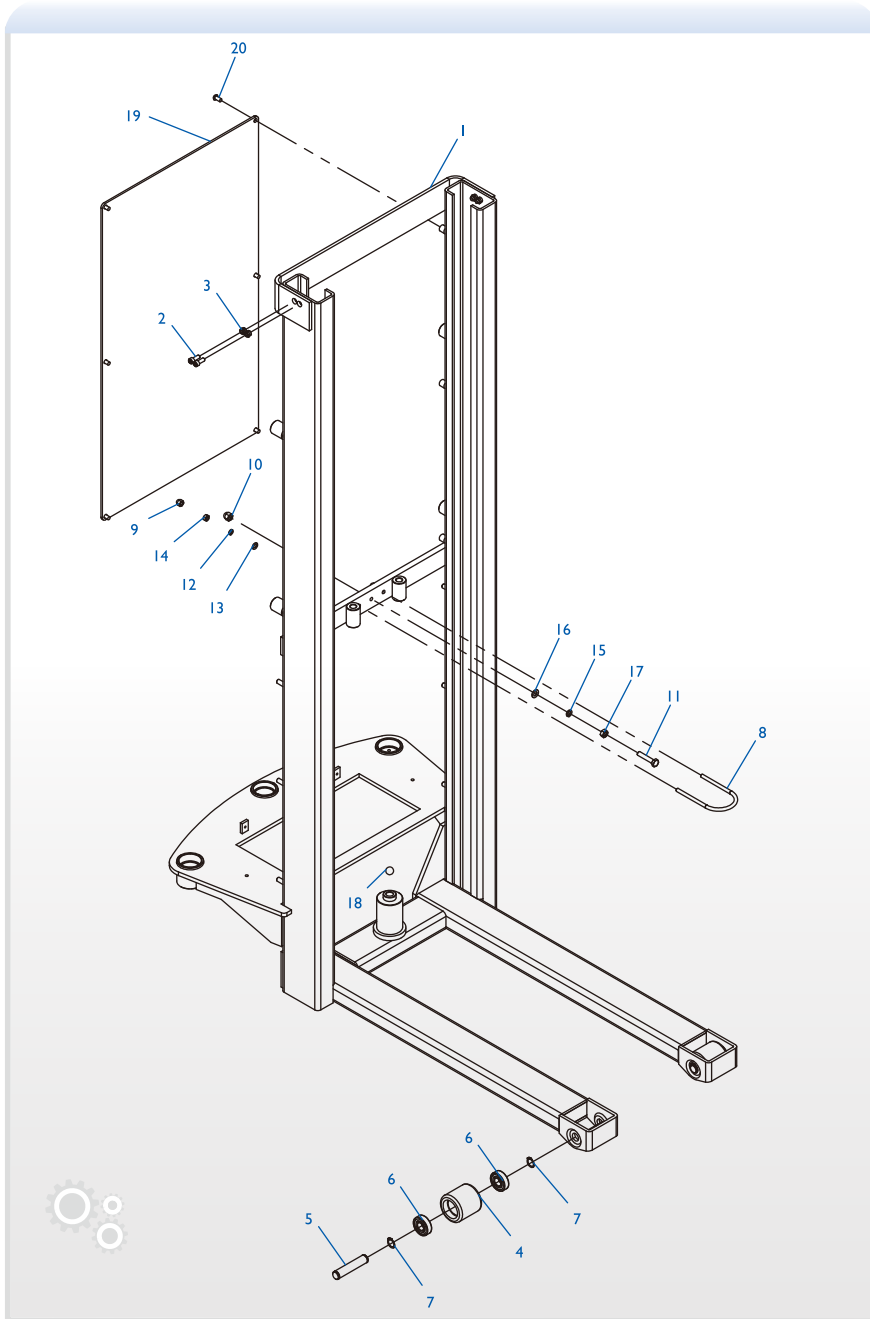
Parts list- Single frame

S10/15 Series Semi-electric Pallet Stackers

NO.	Parts number	Description	Qty.
1	WC02000899	External frame,5012(1.5t)	1
2	WE03000014	Hexagon socket head cap screw	4
3	WE04000015	Hexagon locking nut	4
4	WC02000227	Iron-core PU wheel	2
5	WC02000259	Front wheel shaft	2
6	WC02000022	Deep groove ball bearing	2
7	WE07000004	Circlip for shaft	4
8	WC02000264	Locking ring	1
9	WE04000014	Acorn nut--sssembling type	2
10	WE04000013	Acorn nut--sssembling type	1
11	WE01000002	M10 × 50 bolt	1
12	WE05000005	Spring lock washer	2
13	WE05000008	Plain washer	2
14	WE04000008	Hexagon nut	2
15	WE05000002	Spring lock washer	1
16	WE05000009	Plain washer	1
17	WE04000009	Hexagon nut	1
18	WC02000020	Steel ball	1
19	WC02000898	Glass baffle	1
20	WE97000031	Hexagon socket button head screw	6

 NOTE:For the 1.5t and 2.0t models

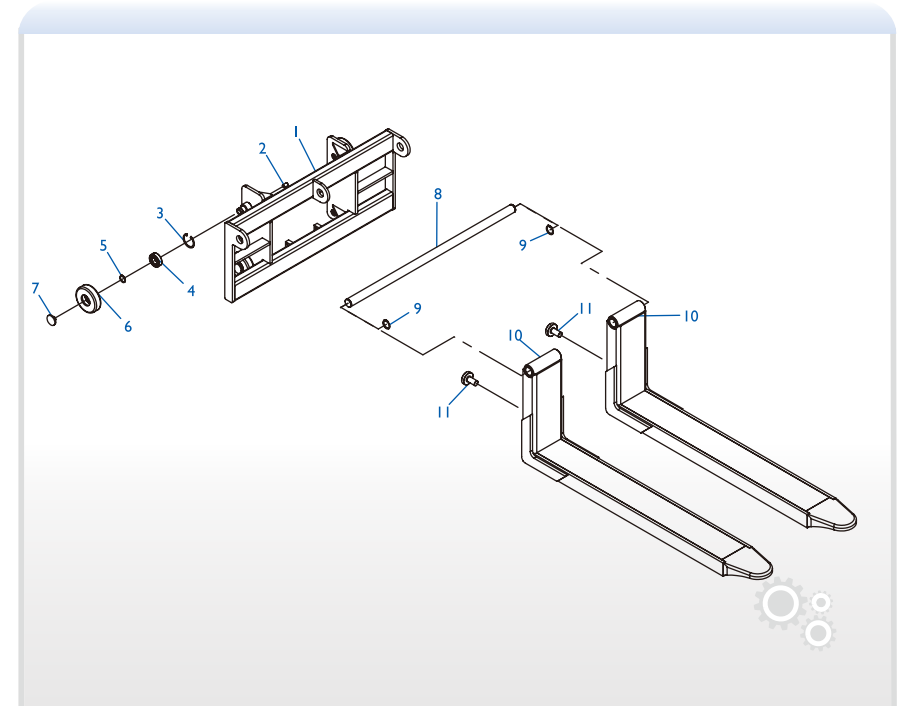
Parts list- Single frame




Parts list- Movable fork assy

S10/15 Series Semi-electric Pallet Stackers

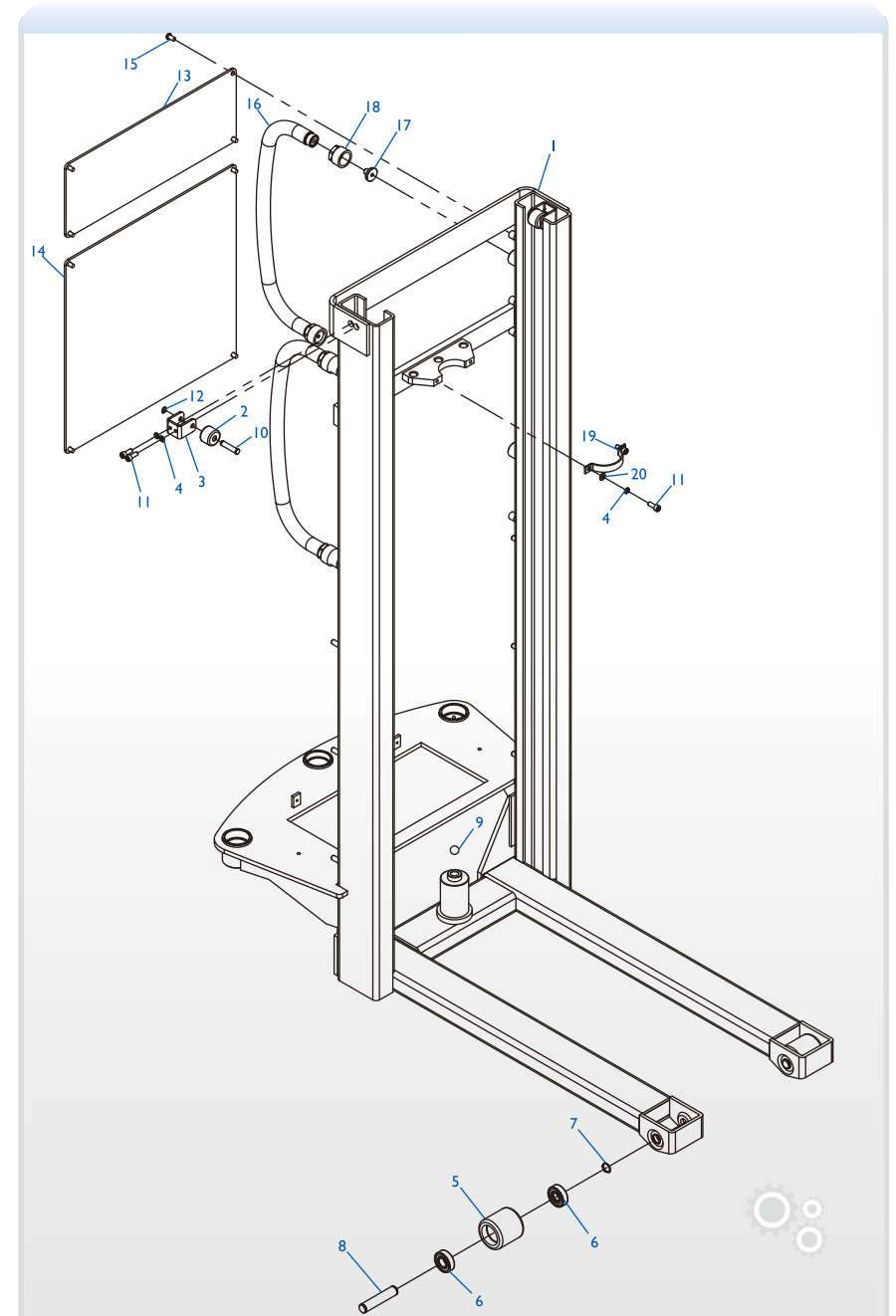
NO.	Parts number	Description	Qty.
1	WC02000319	Fork guide plate bracket(1.5t), black	1
2	WE03000019	Gb77, Hexagon socket set screw with flat point M12x20,galvanized	8
3	WE07000007	GB893.1,Circlip for hole 52,blackening	4
4	WC02000224	GB276,Deep groove ball bearing 6205, two-side shielded	4
5	WE07000010	GB894.1,Circlip for shaft 25,blackening	4
6	WC02000231	Iron wheel	4
7	WC02000232	Iron wheel cap	4
8	WC02000283	Shaft (830) galvanized	1
9	WE07000011	GB894.1,Circlip for shaft 32,blackening	2
10	WC02000282	Fork assembly (1150), black	2
11	WC02000284	Adjusting screw,galvanized	2



 NOTE:For single mast models

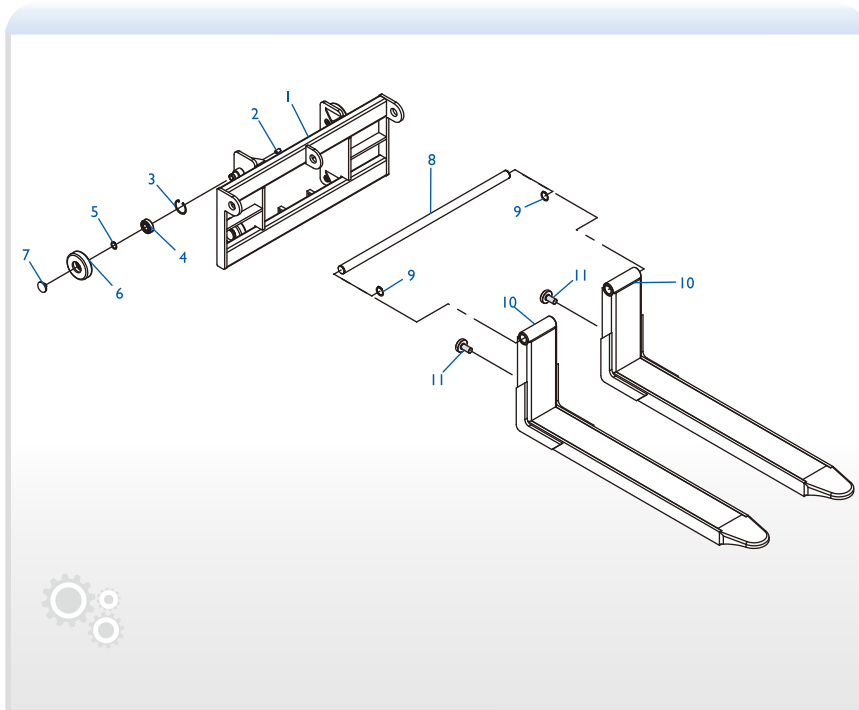
Parts list- External frame

NO.	Parts number	Description	Qty.
1	WC02000830	External frame,5012(1.5t,2.5m)	1
	WC02000876	External frame,5012(1.5t,3.0m)	1
	WC02000904	External frame,5012(1.5t,3.5m)	1
2	WC02000293	Upper guide wheel	2
3	WC02000294	Upper guide bracket	2
4	WE05000005	Spring lock washer	6
5	WC02000227	Iron-core PU wheel	2
6	WC02000022	Deep groove ball bearing	4
7	WE07000004	Circlip for shaft	4
8	WC02000259	Front wheel shaft	2
9	WC02000020	Steel ball	1
10	WC02000295	Pivot	2
11	WE03000014	Hexagon socket head cap screw	6
12	WE07000008	Circlip for shaft	2
13	WC02000865	Glass baffle I (2.5m/3.0m/3.5m)	1
14	WC02000866	Glass baffle II (2.5m)	1
	WC02000875	Glass baffle II (3.0m)	1
	WC02000903	Glass baffle II (3.5m)	1
15	WE97000031	Hexagon socket button head screw	8
16	WC02000862	Handrail	2
17	WC02000863	Fixing screws for handrails	4
18	WC02000864	Connecting nuts for handrail	4
19	WC02000867	Cylinder coupling	1
20	WE05000008	Plain washer	2



Parts list- Movable fork assy

NO.	Parts number	Description	Qty.
1	WC02000323	Fork guide plate bracket, black(1.5t/2.0t)	1
2	WE03000019	Gb77, Hexagon socket set screw with flat point M12x20,galvanized	8
3	WE07000007	GB893.1,Circlip for hole 52,blackening	4
4	WC02000224	GB276,Deep groove ball bearing 6205, two-side shielded	4
5	WE07000010	GB894.1,Circlip for shaft 25,blackening	4
6	WC02000231	Iron wheel	4
7	WC02000232	Iron wheel cap	4
8	WC02000283	Shaft (830) galvanized	1
9	WE07000011	GB894.1,Circlip for shaft 32,blackening	2
10	WC02000282	Fork assembly (1150), black	2
11	WC02000284	Adjusting screw,galvanized	2

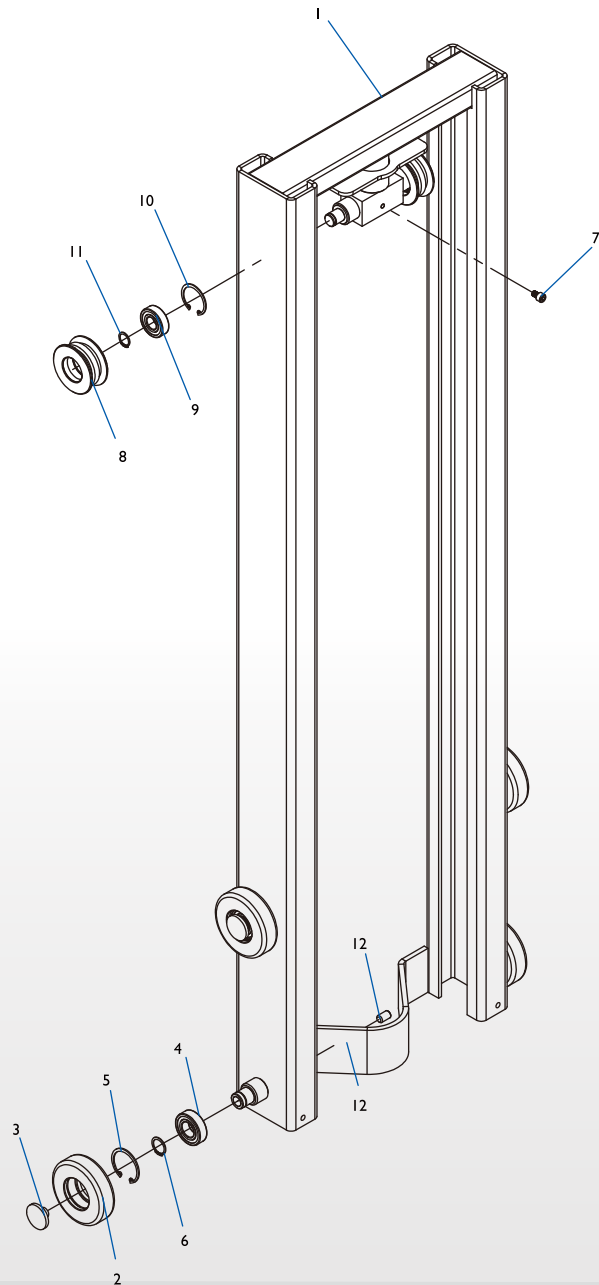


Parts list- Internal frame

NO.	Parts number	Description	Qty.
1	WC02000812	Internal frame,5012 (2.5m)	1
	WC02000874	Internal frame,5012 (3.0m)	1
	WC02000902	Internal frame,5012 (3.5m)	1
2	WC02000231	Iron wheel	4
3	WC02000232	Iron wheel cap	4
4	WC02000224	Deep groove ball bearing	4
5	WE07000007	Circlip for hole	4
6	WE07000010	Circlip for shaft	4
7	WE03000017	Hexagon socket head cap screw	1
8	WC02000261	Sprocket	2
9	WC02000022	Deep groove ball bearing	2
10	WE07000006	Circlip for hole	2
11	WE07000004	Circlip for shaft	2
12	WE03000019	Hexagon socket set screw with flat point	8

 NOTE:For double mast models

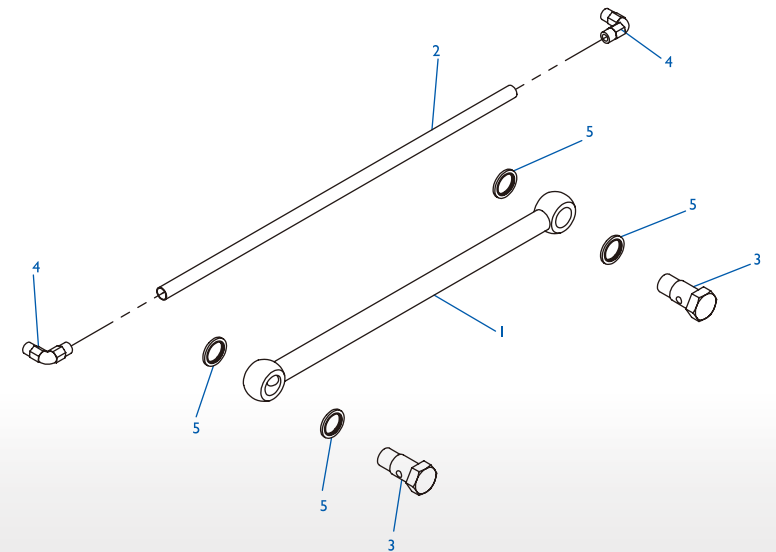
Parts list- Internal frame



Parts list- Oil pipe

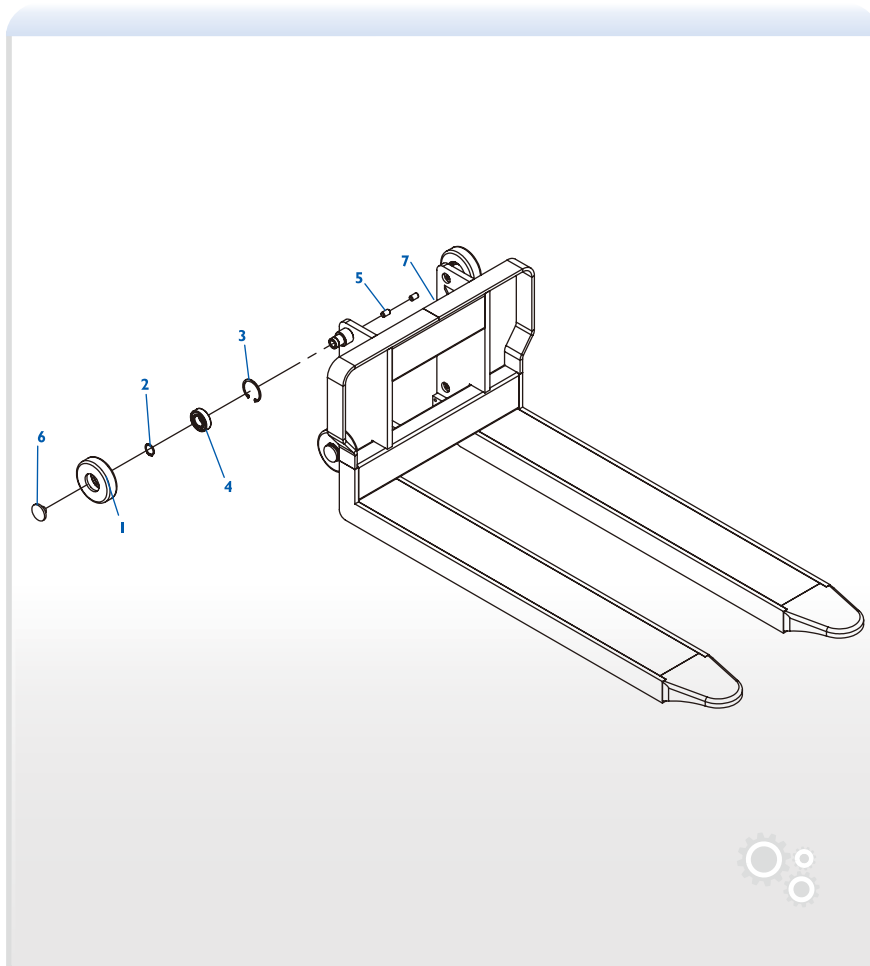
S10/15 Series Semi-electric Pallet Stackers


NO.	Parts number	Description	Qty.
1	WC02000266	High-pressure pipe	1
2	WC02000270	Oil return pipe (1.6m)	1
	WC02000331	Oil return pipe (2.0m)	
	WC02000296	Oil return pipe (2.5m)	
	WC02000301	Oil return pipe (3.0m)	
	WC02000311	Oil return pipe (3.5m)	
3	WC02000267	Bolt	2
4	WC02000223	Union elbow	2
5	WC02000228	GB982, Combination sealing gasket 18	4



Parts list- Fixed fork assy

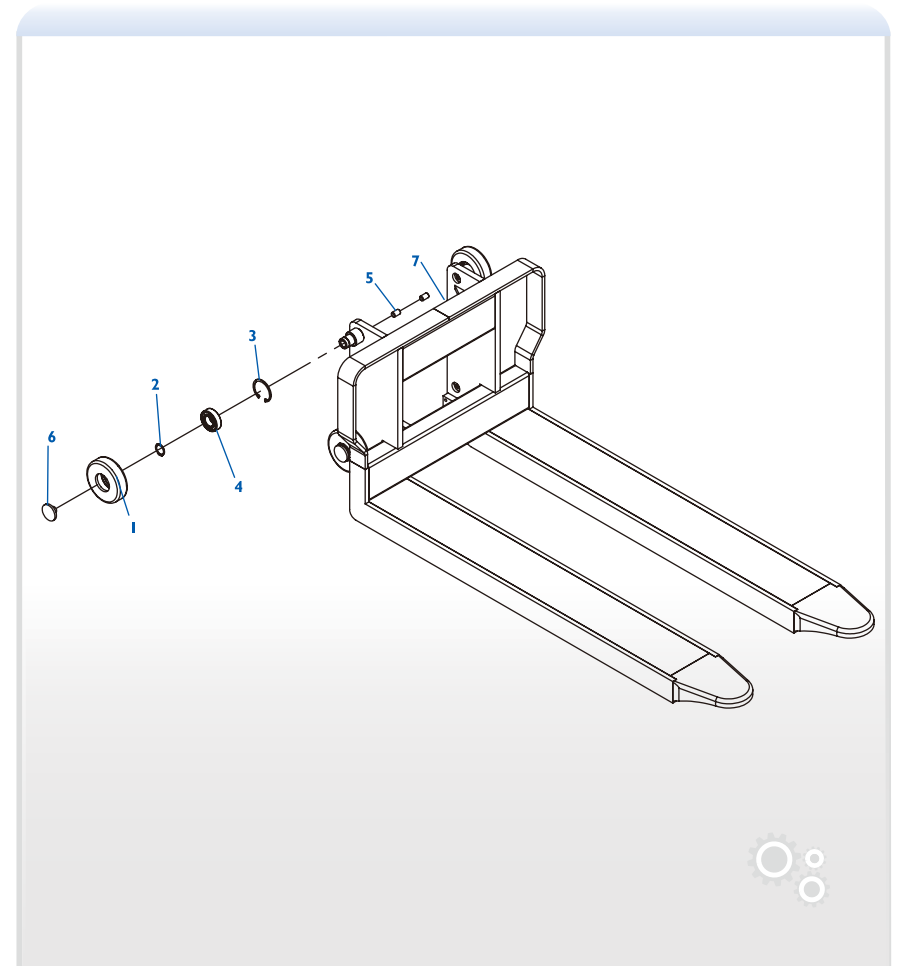
NO.	Parts number	Description	Qty.
1	WC02000231	Iron wheel	4
2	WE07000010	Circlip for shaft	4
3	WE07000007	Circlip for hole	4
4	WC02000224	Deep groove ball bearing	4
5	WE03000019	Hexagon socket set screw with flat point	8
6	WC02000232	Iron wheel cap	4
7	WC02000900	Fork frame welded	1




 NOTE:For single mast models

Parts list- Fixed fork assy

NO.	Parts number	Description	Qty.
1	WC02000231	Iron wheel	4
2	WE07000010	Circlip for shaft	4
3	WE07000007	Circlip for hole	4
4	WC02000224	Deep groove ball bearing	4
5	WE03000019	Hexagon socket set screw with flat point	8
6	WC02000232	Iron wheel cap	4
7	WC02000831	Fork frame welded	1



 NOTE:For double mast models